

Long Island Botanical Society

Vol. 33 No. 2

The Quarterly Newsletter

Spring 2023

Seaweeds Depicted as Art

Larry B. Liddle

Professor Emeritus, Long Island University (formerly Southampton College), NY



Agardhiella sp. Montauk Point, NY. Low intertidal. August 2007.

Preserving seaweeds on paper is convenient and permanent. For example, seaweed specimens of Linnaeus (1707-1778) are still available for study at the British Museum.

Special watercolor or herbarium paper is immersed in seawater on a tray and the freshly collected specimen floated on it and arranged. After the water is drained off, the paper



Ulva lactuca and *U. intestinalis*. East Inlet, Lake Montauk, NY. August 2010.

with seaweed is put into a press. It's a tense moment when draining the water off the paper for fear that the specimen will drain off with it and the carefully arranged fronds clump together. The specimen has to be further arranged with water at specific places. Crumpled up wax paper to allow the water to soak through is placed on the specimen.

(continued on page 15)

Long Island Botanical Society

Founded: 1986 • Incorporated: 1989

The Long Island Botanical Society is dedicated to the promotion of field botany and a greater understanding of the plants that grow wild on Long Island, New York.

Visit the Society's Web site
www.libotanical.org

Executive Board

President

Eric Lamont 631-722-5542

elamont@optonline.net

Vice President

Andrew Greller agreller2@optonline.net

Treasurer

Kathleen Gaffney kg73@cornell.edu

Recording Secretary

Sue Avery suea483@gmail.com

Corresponding Secretary

John Potente ourialis@gmail.com

Committee Chairpersons

Flora

Eric Lamont elamont@optonline.net

Andrew Greller agreller2@optonline.net

Field Trips

Robert Chapman

bob.chapman516@icloud.com

Programs

John Potente ourialis@gmail.com

Membership

Lois Lindberg lalindberg3@optonline.net

Conservation

John Turner redknot2@verizon.net

Education

MaryLaura Lamont

woodpink59@gmail.com

Hospitality

Kathleen Gaffney kg73@cornell.edu

Webmaster

Donald House libsweb@yahoo.com

Newsletter Editor

Eric Lamont

elamont@optonline.net

Society News

LIBS gratefully acknowledges donors. The society would not exist without support from its members and LIBS takes this opportunity to express sincere appreciation to the following members for their generous donations in 2022:

Eleanor Burns

Robert Chapman

Leslie Moore Clark

Barbara H. Conolly

Sue & Ken Feustel

Douglas Futuyma

Marie George

Michael Goudket

Andrew Greller

Joseph Grupp

Louise Harrison

Peggy & Jack Horman

Donald House

David Kennedy

Eric & MaryLaura Lamont

Maureen Levine

Lois & Allan Lindberg

Mary Maran

Baruch May

Susanne McGuire

Al & Irene Messina

Margo Myles

Elizabeth Pessala

John Potente

Timothy Purtell

Marie Ruffino

Andrew Sabin Family Foundation

Laura Schwanof

John & Lynn Seirup

Gigi Spates

Dava Stravinsky

Lenore Swenson

Kristine Wallstrom

Ray Welch

Richard Wines & Nancy Gilbert

Robert Zarembo

LIBS Life Members. One way members support the society is by becoming a Life Member. Such support keeps the society vibrant and able to achieve its goals. Please show your support of LIBS by becoming a Life Member.

Current Life Members of LIBS:

Jim Ash

Susan Avery

Lillian Ball

Kim Berlin

Karen Blumer & Mike Madigan

Stephen Borghardt

Victoria Bustamante

Joanne Cardinali

Robert Chapman

Leslie Clarke

Regina Conlon

Barbara H. Conolly

Leon Dalva

Robert DeCandido

Wei Fang

Sue & Ken Feustel

Tom Fiore

Judith M. Fitzgerald

Kathleen Gaffney

April Gonzales

Andrew Greller

Louise Harrison

Jane Jackson

Ann F. Johnson

Patricia Klein

David Kunstler

Eric & MaryLaura Lamont

James C. Lendemer

Lois & Allan Lindberg

Carrie Ann Lindstadt-Iurka

Mary Maran

Al & Irene Messina

Bill Miller

Gerry Moore

Enrico Nardone

Larry Penny

Elizabeth Pessala

Planting Fields Foundation

John Potente

Molly Nash Rouzie

Andrew Sabin Family Foundation

Seatuck Environmental

Association

Vincent Simeone

Dava Stravinsky

Taylor Sturm & Ally Beattie

Lenore Swenson

Guy Tudor

Ray Welch

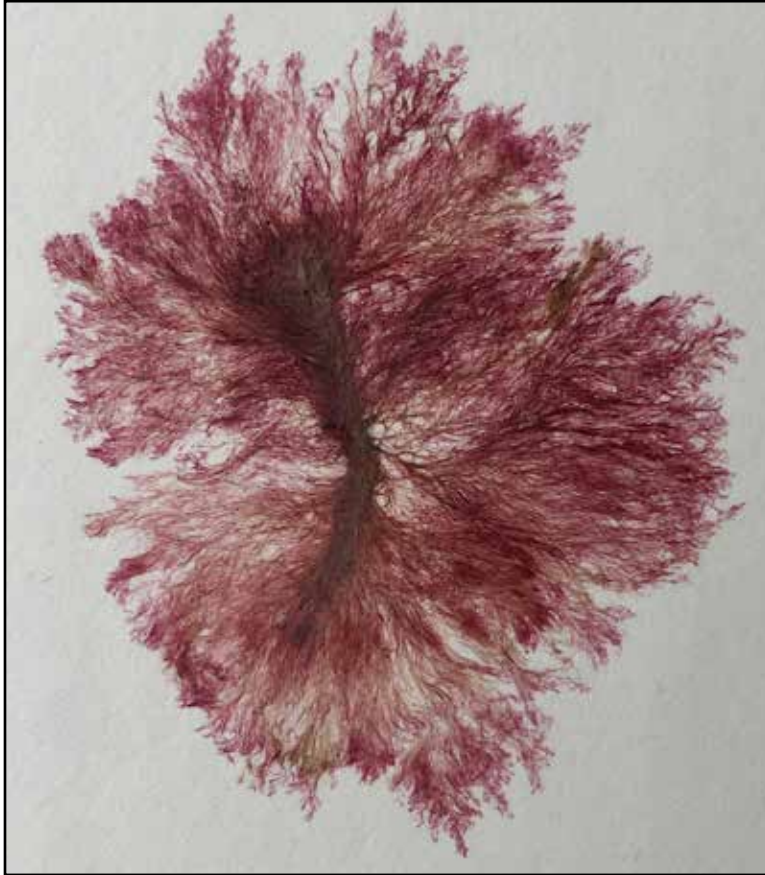
David Werier

Elettra Wiedemann

Stephen M. Young

Robert Zarembo

(Seaweed Depicted As Art, continued from front cover)



Blotters (newspapers are ideal) are placed on either side. A heavy weight squeezes the water out. The blotters are changed regularly until the specimen is completely dry. They are **not** air-dried. The seaweed usually sticks to the paper naturally. If not, loose branches can be fixed with a light amount of casein water-based glue.

I think that part of the “art” of pressing seaweeds involves arranging the specimens as if they are floating in the sea. This requires a kind of artist’s approach. I use watercolor brushes to separate the fine branches. It can take an hour or more to arrange and rearrange a specimen. I prefer to put only one species per page. Although that may include different life stages of the species.

Collections of seaweeds are valuable ecological records. They are also useful for teaching phycology. There are large collections at the Smithsonian, the British Museum, UC Berkeley, and U Michigan.

(continued on next page)

Callithamnion baileyi. Montauk Point, NY. July 1007.

Larry Liddle, a brief bio:

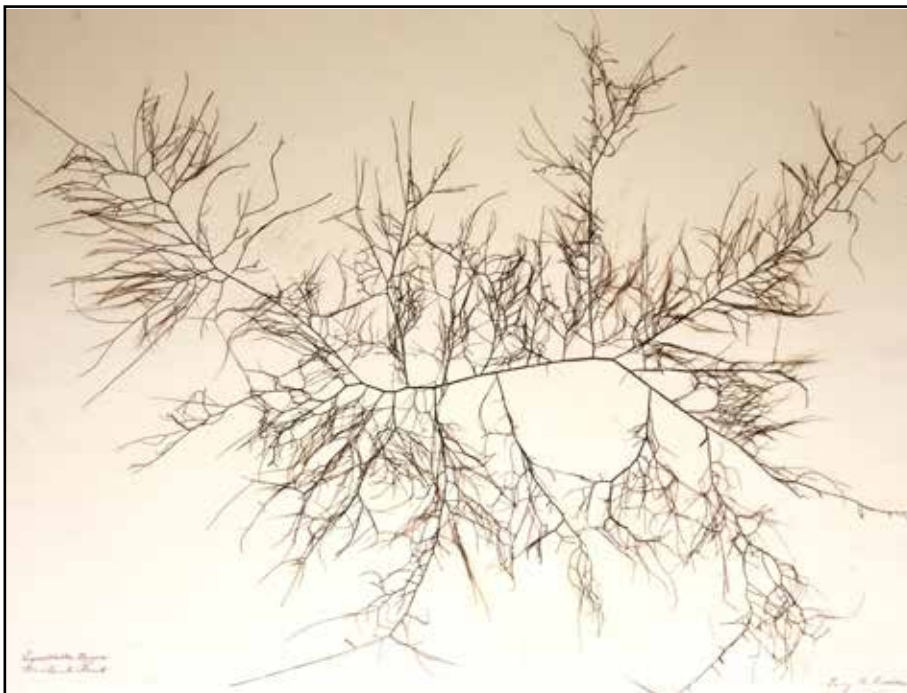
Many moons and low tides ago when I was a graduate student in Botany at the University of Chicago, I took a 12-week summer course in Marine Botany at the Marine Biological Laboratory in Woods Hole, Mass. As part of that course we took almost daily field trips to collect seaweeds by snorkeling and wading. We brought the study specimens back to the lab and pressed them. Therefore, each of us had a representative collection, a herbarium as it were, of the region. I went on to study Marine Botany for my Ph.D. at UC Santa Barbara and accumulated pressed specimens of California especially by scuba diving in the kelp bed. For two summers during that time I worked as a research assistant for Isabella Abbott at Hopkins Marine Station of Stanford University in Pacific Grove. We met every low tide and pressed the seaweeds to establish the collection described in the definitive book by Abbott and Hollenberg, “The Marine Algae of California,” known affectionately as Big Mac. Throughout the rest of my research and teaching at the University of Puerto Rico and Southampton College

(now Stony Brook University) in New York, I expanded my herbarium. Upon retirement I contributed it to Roger Williams University in Rhode Island. I continue to press seaweeds as a hobby. I do so with greater care so they can be better appreciated for their aesthetic qualities.

During the years Larry was a professor at Southampton College (1976-2005) it had a nationally recognized marine science program that produced an unprecedented number of Fulbright awards and an impressive number of alumni (including some of Larry’s former students) who went on to careers in prestigious universities and research centers.

Larry has been a member of LIBS since 2008 and has written several articles on Long Island seaweeds for the newsletter, presented talks, and led field trips before retiring to Santa Barbara, California in 2016, a few months after attending the LIBS 30th anniversary trip to the Sierra Nevada Mountains, California.

(Seaweed Depicted As Art, continued from page 15)

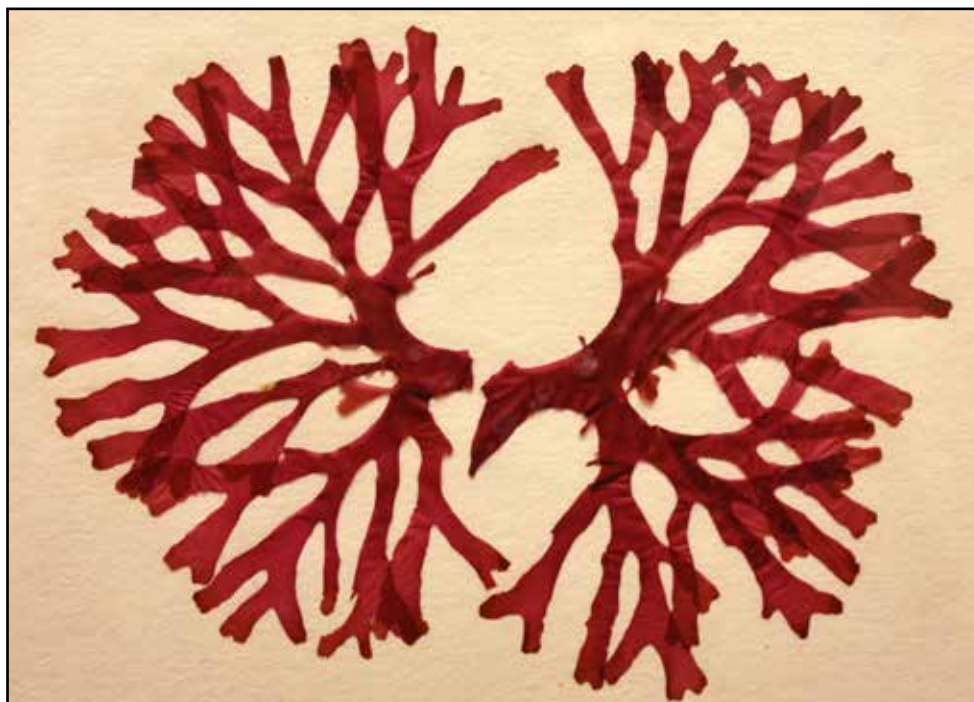


Top left: *Asperococcus echinatus*. Montauk Point, NY. August 2015. Top right: *Saccharina latissima*. Juvenile. East Inlet, Montauk Lake, NY. August 2010. Middle: *Agardhiella tenera*. ca. 7 m depth. Peconic Bay South, Noyac, NY. Bottom left: *Gigartina corymbifera*. Fragment. Butterfly Beach, Montecito, Santa Barbara, CA. March 2023. Bottom right: *Fucus distichus*. Montauk Point, NY. May 2007.



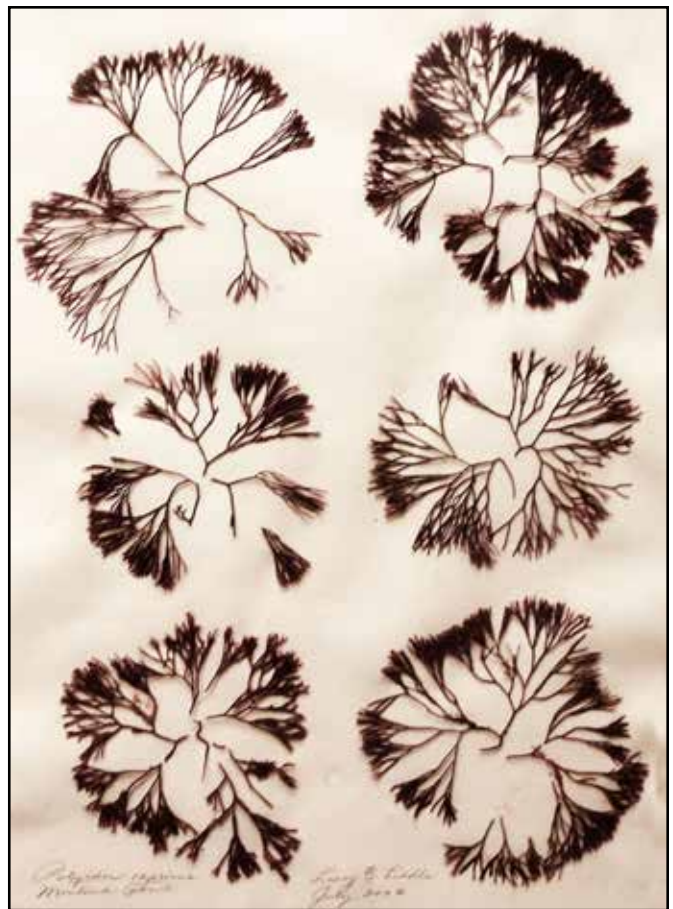


Top left: *Egregia laevigata*. Boa Kelp, juvenile. West Beach, Santa Barbara, CA. October 2022. Top right: *Callophyllis* sp. (?). West Beach, Santa Barbara, CA. December 21, 2022. Middle right: *Sargassum filipendula*. Montauk Point, NY. August 2007. Bottom: *Rhodomenia callophyllidoides* (?). Ellwood Beach, Goleta, CA. January 2022.



(continued on next page)

(Seaweed Depicted As Art, continued from page 17)



Top left: Unknown Rhodophyta (red alga). West Beach, Santa Barbara, CA. December 2022. Top right: *Polyides caprinus*. Montauk Point, NY. July 2007. Bottom left: *Ascophyllum nodosum*. Lake Montauk, NY. November 2007. Bottom right: *Gigartina corymbifera*. Ledbetter Beach, Santa Barbara, CA. September 2021.

1st post-Covid LIBS BBQ

June 13, 2023 (Tuesday) 5pm. Meet at the Seatuck Environmental Center (Scully Estate), Islip, Suffolk Co. Salads, desserts, etc. are gladly accepted but please join us even if you can't bring something, we always have lots of extra food! The below photos are from the June 8, 1999 LIBS barbeque at the Bill Paterson Nature Center, Muttontown Preserve, Nassau Co. Photos and "quotes" in the below caption by Barbara Conolly.



1



2



3



4



5



6



7



8



11



12



9



10

1. "At the Trough." (left to right): Tom Stock, Max Wheat, Al Lindberg, Rich Kelly. 2. Carol & John Johnston. 3. Eric Lamont & Jane Blanchard. 4. Rich & Pat Kelly. 5. Al Lindberg (left) & Skip Blanchard. 6. Betty Lotowycz (left) & Zu Prolly. 7. Lois Lindberg. 8. John Potente. 9. "Caught with a pickle." Betty Lotowycz. 10. Donald House. 11. Tom Meoli. 12. Tom Stock & Nancy Smith.

UPCOMING EVENTS

June 3, 2023 (Saturday) 9am

Field Trip to Forest Park, Queens Co.

Trip Leader: Mike Feder

Designed by Frederick Olmsted in the 1890s, Forest Park is the third largest park in Queens. We will visit some oddball plant populations as we walk through the Northeast section of this park. The walk will last approximately 3 hours. Register with Bob Chapman (bob.chapman516@icloud.com) and more details about the trip and directions to the meeting place will be sent. Joint field trip with the Torrey Botanical Society.

June 13, 2023 (Tuesday) 5pm

1st post-Covid LIBS BBQ:

Meet at the Seatuck Environmental Center (Scully Estate), Islip, Suffolk Co. Salads, desserts, etc. are gladly accepted but please join us even if you can't bring something, we always have lots of extra food! For planning purposes please email Eric Lamont if you'd like to attend.

June 17, 2023 (Saturday) 10am

Field Trip to Muttontown Pinetum, Nassau Co.

Trip Leaders: Al and Lois Lindberg

Register with Bob Chapman (bob.chapman516@icloud.com) and more details about the trip and directions to the meeting place will be sent.

August 5, 2023 (Saturday) 10am

Field trip to Hallock State Park Preserve, Northville, Suffolk Co.

Trip Leader: MaryLaura Lamont

Joint field trip with the North Shore Land Alliance. Register with MaryLaura Lamont (marylaura.lamont@parks.ny.gov) and more details about the trip and directions to the meeting place will be sent.

September 23, 2023 (Saturday) 10am

Field Trip to Oyster Pond, a coastal salt pond community, Montauk Point State Park, Suffolk Co.

Trip Leader: Victoria Bustamante

Joint field trip with the New York Flora Assoc. Register with Vicki Bustamante (vickibustamante@gmail.com) and more details about the trip and directions to the meeting place will be sent.

October 12, 2023 (Thursday) 6-9pm

1st post-Covid LIBS Member's Meeting

Speaker: Dave Taft, Topic: Wild Orchids of Long Island

Meeting Place: Syosset Public Library, 225 South Oyster Bay Road, Syosset NY 11753.

From 6:15 to 6:45 we will have social time followed by a short business meeting. The talk is scheduled to begin at 7pm. The library was so pleased to host LIBS that the talk will be open to all residents of the Syosset school district and will be presented in the auditorium.